

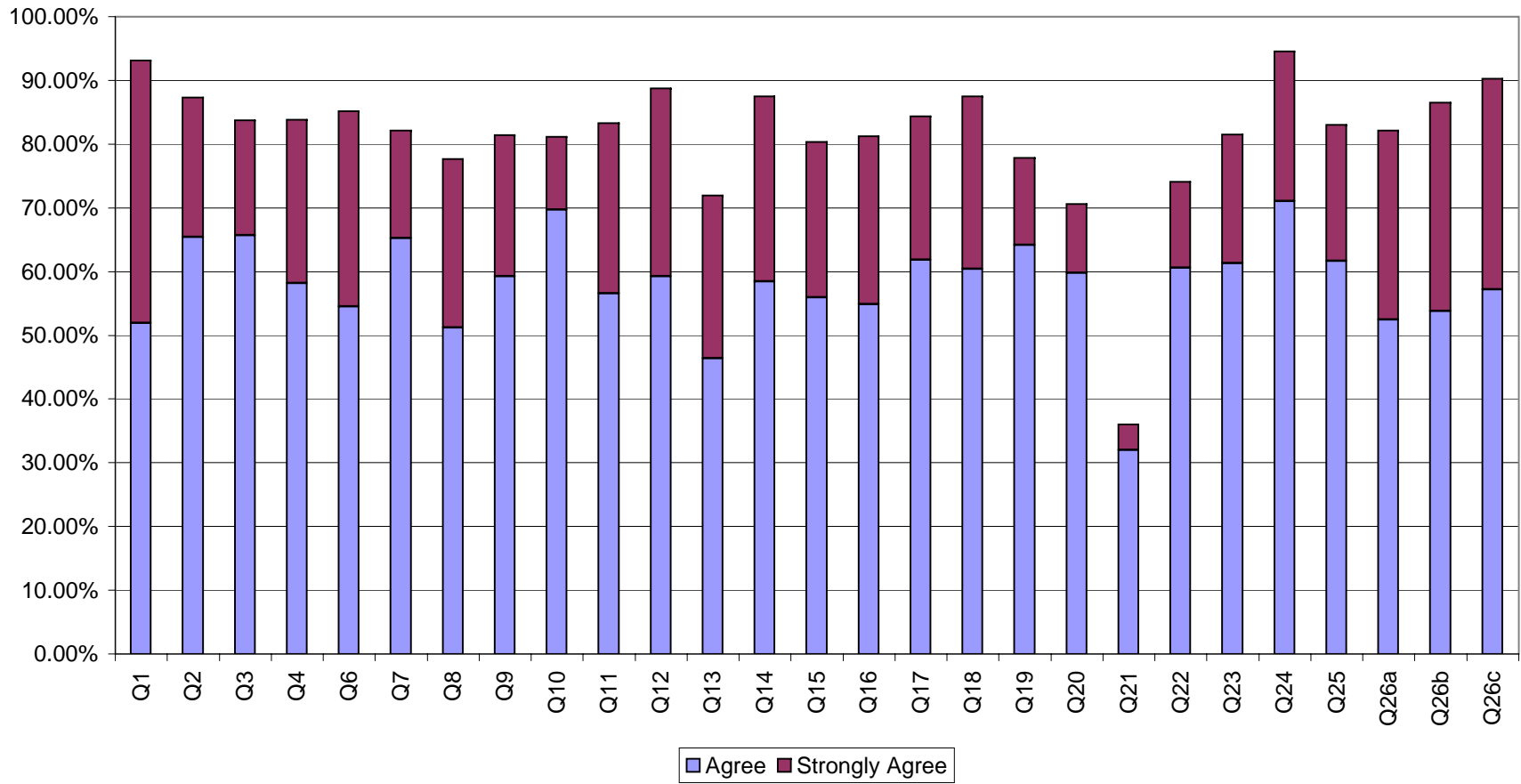
2005 PWSB Survey Results
All Parents

	Responses	Mean	Strongly Disagree	Disagree	Agree	Strongly Agree	Total
Number of surveys received: 428							
1. How welcome do you feel when entering the school? *	420	3.33	1.67%	5.24%	51.90%	41.19%	100.00%
2.The learning environment in the classroom	379	3.07	2.64%	10.03%	65.44%	21.90%	100.00%
3.The curriculum you child is being taught	411	2.99	2.68%	13.63%	65.69%	18.00%	100.00%
4.The emphasis on basic reading, writing, and mathematical skills	409	3.06	3.42%	12.71%	58.19%	25.67%	100.00%
6>Your child's skills in using computers	411	3.12	4.14%	10.71%	54.50%	30.66%	100.00%
7.The quality of learning resources available to your child	403	2.96	2.98%	14.89%	65.26%	16.87%	100.00%
8.The amount of help and support provided to your child by the teachers	412	2.97	6.80%	15.53%	51.21%	26.46%	100.00%
9>Your child is being challenged to do his or her best	415	3.00	3.61%	14.94%	59.28%	22.17%	100.00%
10.The amount of homework your child has	419	2.88	4.77%	14.08%	69.69%	11.46%	100.00%
11>Your child's academic achievement	412	3.07	3.16%	13.59%	56.55%	26.70%	100.00%
12>Your child is learning to take responsibility for his or her own actions	417	3.16	2.40%	8.87%	59.23%	29.50%	100.00%
13.The discipline in the school	410	2.88	9.76%	18.29%	46.34%	25.61%	100.00%
14.The safety of your child at school	416	3.12	4.57%	7.93%	58.41%	29.09%	100.00%
15.The extra-curricular activities offered to your child	402	3.00	4.48%	15.17%	55.97%	24.38%	100.00%
16.The leadership and direction provided by administrators in your child's school	399	3.01	6.77%	12.03%	54.89%	26.32%	100.00%
17.The external appearance of the school and its grounds	422	3.03	4.27%	11.37%	61.85%	22.51%	100.00%
18.The internal appearance of the school	424	3.10	4.25%	8.25%	60.38%	27.12%	100.00%
19.The information you receive about the school	393	2.85	6.87%	15.27%	64.12%	13.74%	100.00%
20.The variety of educational programs offered by the school district	388	2.73	8.25%	21.13%	59.79%	10.82%	100.00%
21.The amount of education funding your school receives	328	2.17	22.87%	41.16%	32.01%	3.96%	100.00%
22.The opportunity for you to be involved in decisions affecting education in your child's school	398	2.81	6.53%	19.35%	60.55%	13.57%	100.00%
23.The communication between your child's school and home	421	2.96	5.70%	12.83%	61.28%	20.19%	100.00%
24.The number of report cards	425	3.17	0.94%	4.47%	71.06%	23.53%	100.00%
25.The quality of education that your child is receiving in his or her school	412	2.99	5.10%	11.89%	61.65%	21.36%	100.00%
26a. Level of bussing service *	330	3.05	6.97%	10.91%	52.42%	29.70%	100.00%
26b. Level of safety of the bus *	318	3.16	2.83%	10.69%	53.77%	32.70%	100.00%
26c. Cleanliness of school bus *	299	3.21	2.34%	7.36%	57.19%	33.11%	100.00%

* Question New in 2004

2005 PWSB Survey Results
All Parents

All Parents - All Schools



2005 PWSB Survey Results
All Parents

27. In your opinion, what is the single most important issue facing Alberta's Schools?	
Response	Count
Funding	108
Class Size	75
Teaching Quality	20
Education Quality	17
Individual Student Attention	13
Bullying	9
Keeping Small Schools Open	8
Discipline	7
Poor Budgetting	6
Expectations of students	5
Respect for Authority	4
Student Motivation	4
Location of Schools	3
Morals and Values	3
More Schools	3
Parent Communication	3
Poor Textbooks	3
Safe Environment	3
Academic achievement	2
Bussing Service	2
Computer Funding	2
Access to Post-secondary programs	1
Drugs in schools	1
Teaching Evolution	1
Room for Expansion	1
Post-secondary entrance requirements	1
Prejudice	1
Respect of Parents	1
Role Models	1
Student Quality	1
Teacher Student relationship	1
Teachers Dress Code	1
Teachers Salary	1
Too much politics	1